

HLL BlackRock UK Dynamic



Fund factsheet

Feb-12

Fund Objective

To achieve long-term capital growth for investors. The Fund invests primarily in the shares of companies incorporated or listed in the UK which we consider exhibit either growth or value investment characteristics, placing an emphasis as the market outlook warrants. The Fund may also invest in collective investment schemes.

Fund Information

Launch Date	10/20/2008
Currency	GBP
Fund Manager	Blackrock
Fund Expense	1.80% - 1.80%*
ISIN	GB00B3CYNG73
Risk Rating	Higher
Available with:	Hartford Diamond International Investment Bond

Asset Classes

Equity/Stocks	98%
Bonds	0%
Cash	2%
Other	1%

* The fund expense that applies to you depends on when you purchased your product, further details are available on our website www.thehartford.co.uk.

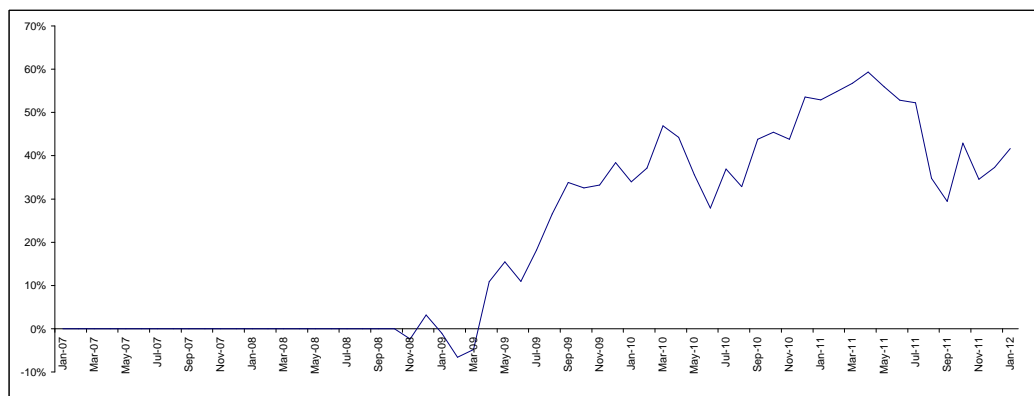
Top 5 Holdings

Vodafone Group PLC	7%
GlaxoSmithKline PLC	7%
British American Tobacco PLC	6%
HSBC Holdings PLC	5%
Rio Tinto PLC	5%

Performance Summary to end Jan-2012

Fund Returns	1 Month	3 Months	6 Months	YTD	1 Year	3 Years Annualised	5 Years Annualised
	3.19%	-0.86%	N/a	3.19%	-7.34%	12.70%	N/a

Performance Chart



Please Note:

- Nothing in this fact-sheet should be construed as advice and is not a recommendation to buy or sell units.
- Please remember that past performance is not an indication of future performance and may not be repeated.
- Funds that ultimately invest in foreign currencies or shares carry a risk that the effect of fluctuations in exchange rates could reduce the value of the fund or income from it.
- Funds that invest in underlying assets that are newly created or small may be subject to higher fund expenses as a percentage of the fund, and the value of the investment consequently reduced. Small funds may be subject to greater volatility in the event of large purchases or withdrawals.
- The value of investments, and the income from them, can go down and well as up and you may get back less than you have invested.
- High volatility funds may result in a substantial loss as a result of the possibility of sudden and large falls in value
- The 3 & 5 year performances shown in the performance summary table are annualised. This is the average annual return for the 3 year and 5 year periods.

'The Hartford' refers to The Hartford Financial Services Group, Inc., the parent company of the family of Hartford companies, and its affiliates, offering financial services products in selected jurisdictions, including Hartford Life Limited (no. 242197) incorporated in the Republic of Ireland with limited liability. Registered and Head Office: Swords Business Campus, Swords, Co. Dublin. Hartford Life Limited is authorised by the Irish Financial Regulator and subject to limited regulation by the Financial Services Authority. Details about the extent of our regulation by the Financial Services Authority are available from us on request.